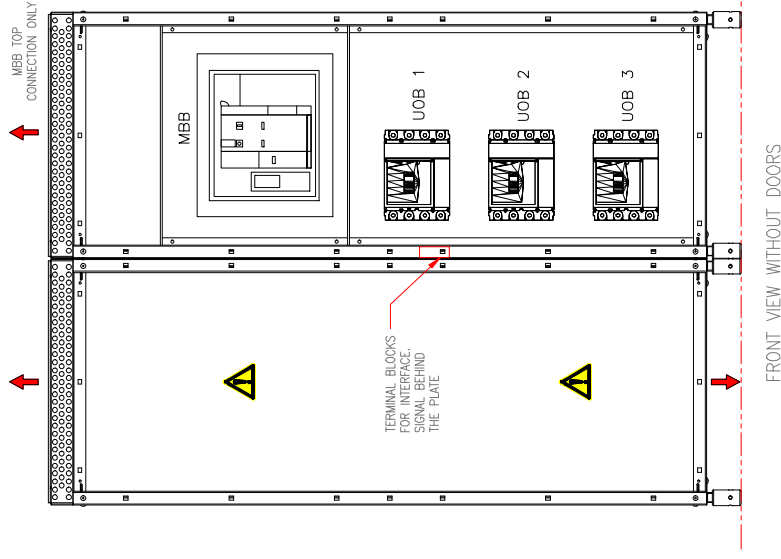


SYSTEM BYPASS CABINET FOR 3 UPS UP TO 1800KVA

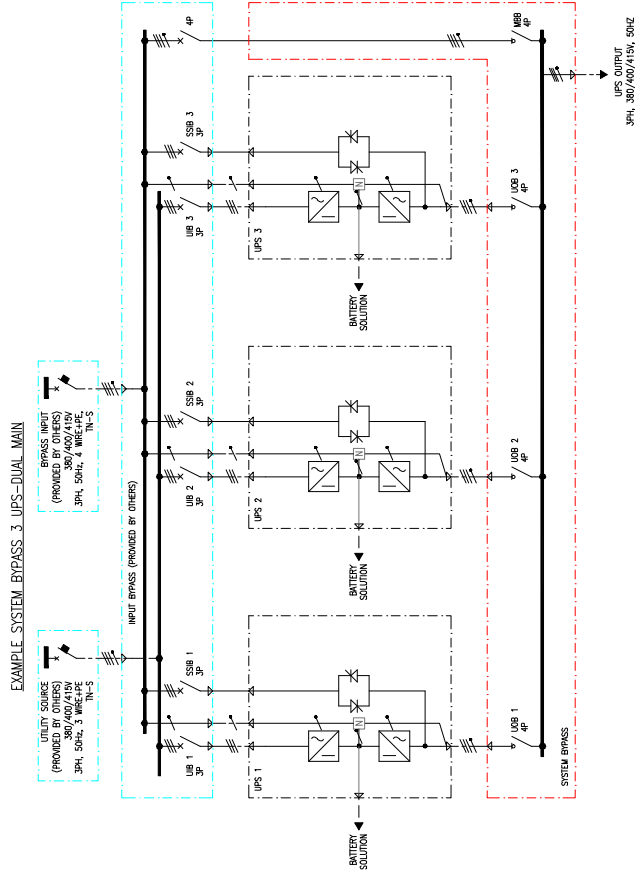


SYSTEM BYPASS 3 UPS - 50KA TN-S - 380V-400-415V

kVA	Description	OSKU Number	MBB SWITCH 4P	MBB In	MBB Copper Cables	UOB Switch 4P	UOB In	UOB Copper Cables	PE Cables
1800	SBC200-600W-C3	GSFE35551	MTZ2 3Z NA	2736	6x300mm ² masy/PNy/N	NS1000MA	912	3x240mm ² masy/PNy/N	15x240mm ² max

Note : Above currents are with a load # PF = 1 (30 °C) with charger and main voltage at 380V.

⚠ SEE PAGE 3. (FOR IMPORTANT NOTES)



PRELIMINARY MECHANICAL DESIGN
NOT FOR CONSTRUCTION

TITLE:	GVL-E3L 200-600KVA SYSTEM BYPASS CABINET FOR 2, 3, 4 AND 4+1 UPS UP TO 2400KVA UOB / MBB ONLY - WITHOUT SB, INFL BREAKER AND LUMPS SINGLE LINE DIAGRAM	DWG NO:	GVL-E3L 200-600KVA 2, 3, 4 and 4+1 UPS System Bypass	REV:	2
PROJECT:	GVL-E3L	ENGINEER:	S.Meerens	APPROVED:	S.Ferrier
		DRAWN:	T.Chung		02-Mar-21
					02-Mar-21
					02-Mar-21



THIS DRAWING AND SPECIFICATIONS HEREIN ARE THE PROPERTY OF SCHNEIDER ELECTRIC AND SHALL NOT BE COPIED, REPRODUCED OR USED IN WHOLE OR IN PART, AS THE BASIS FOR THE MANUFACTURE OR SALE OF ITEMS WITHOUT WRITTEN PERMISSION FROM SCHNEIDER ELECTRIC. THIS DRAWING IS BASED UPON LATEST AVAILABLE INFORMATION AND IS SUBJECT TO CHANGE WITHOUT NOTICE.